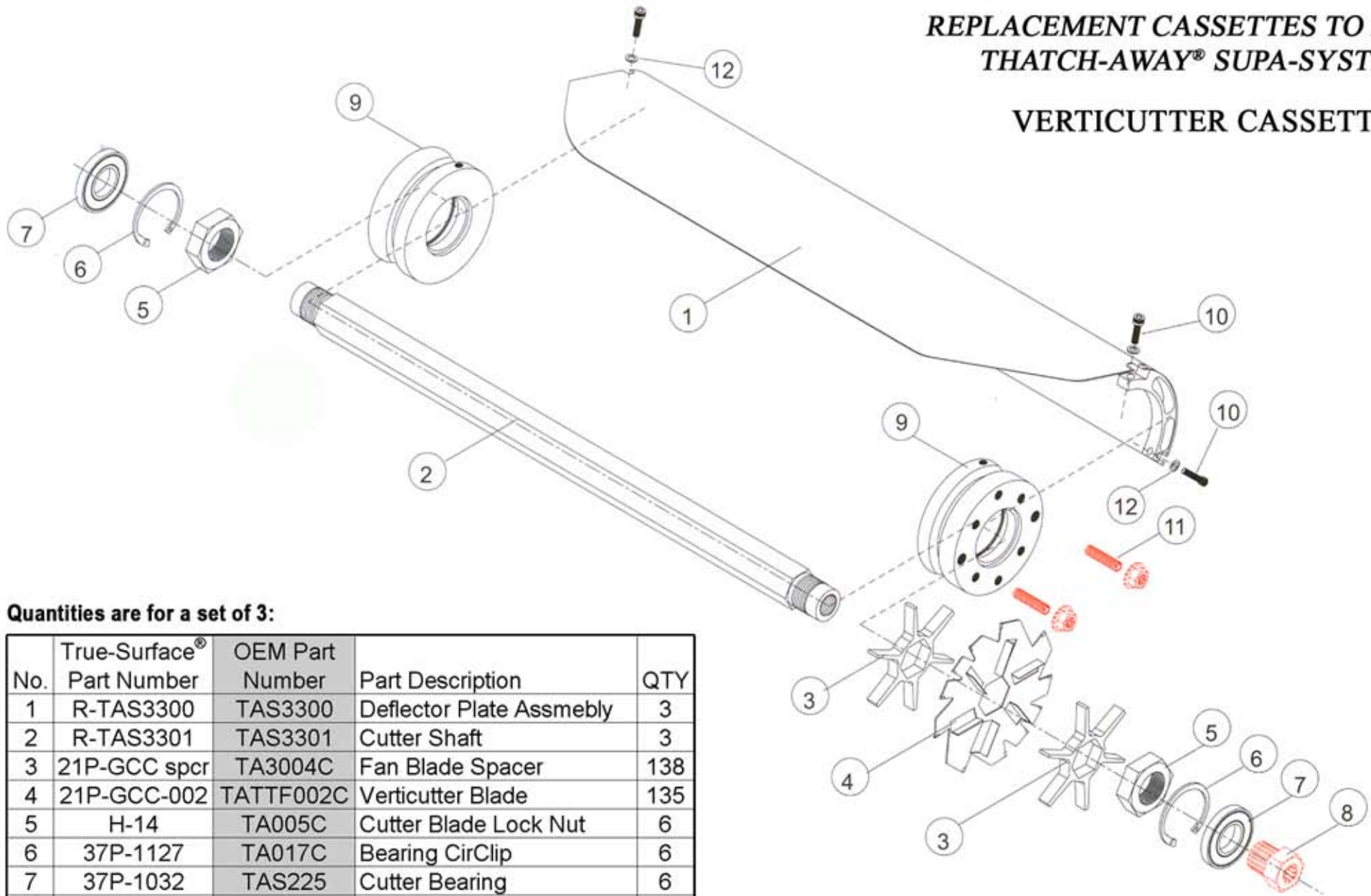


# TRUE-SURFACE®

REPLACEMENT CASSETTES TO FIT THE  
THATCH-AWAY® SUPA-SYSTEM®

## VERTICUTTER CASSETTE



Quantities are for a set of 3:

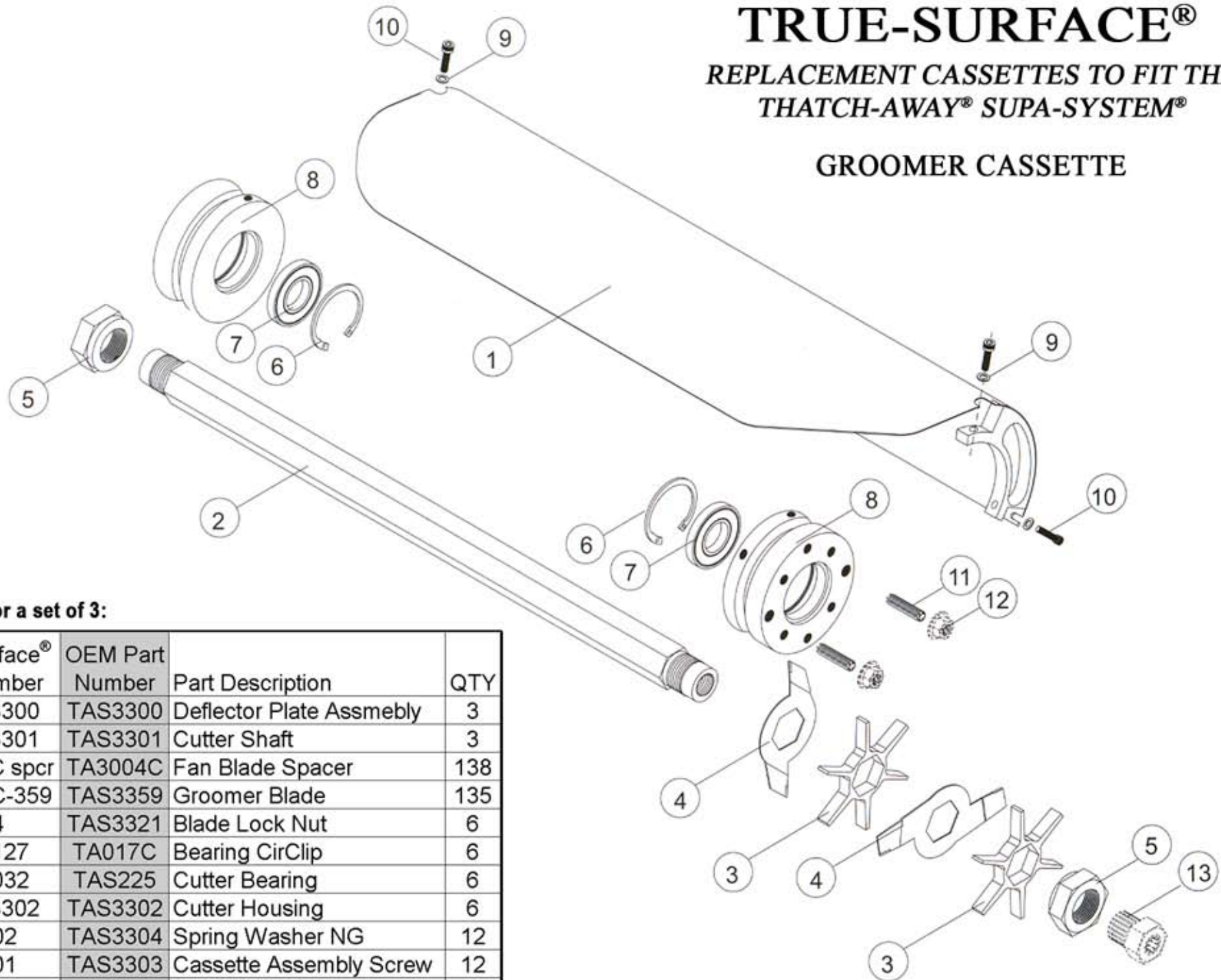
No.	True-Surface® Part Number	OEM Part Number	Part Description	QTY
1	R-TAS3300	TAS3300	Deflector Plate Assmebly	3
2	R-TAS3301	TAS3301	Cutter Shaft	3
3	21P-GCC spcr	TA3004C	Fan Blade Spacer	138
4	21P-GCC-002	TATTF002C	Verticutter Blade	135
5	H-14	TA005C	Cutter Blade Lock Nut	6
6	37P-1127	TA017C	Bearing CirClip	6
7	37P-1032	TAS225	Cutter Bearing	6
8	*	*	Model Specific	*
9	H-1401	TAS3302	Cutter Housing	6
10	H-5002	TAS3303	Cassette Assembly Screw	12
11	*	*	Model Specific	*
12	R-TAS3304	TAS3304	Spring Washer	12

All original equipment manufacturers names and part numbers are used for identification purposes only. We are in no way implying that our products are original equipment parts.

# TRUE-SURFACE®

REPLACEMENT CASSETTES TO FIT THE  
THATCH-AWAY® SUPA-SYSTEM®

## GROOMER CASSETTE



Quantities are for a set of 3:

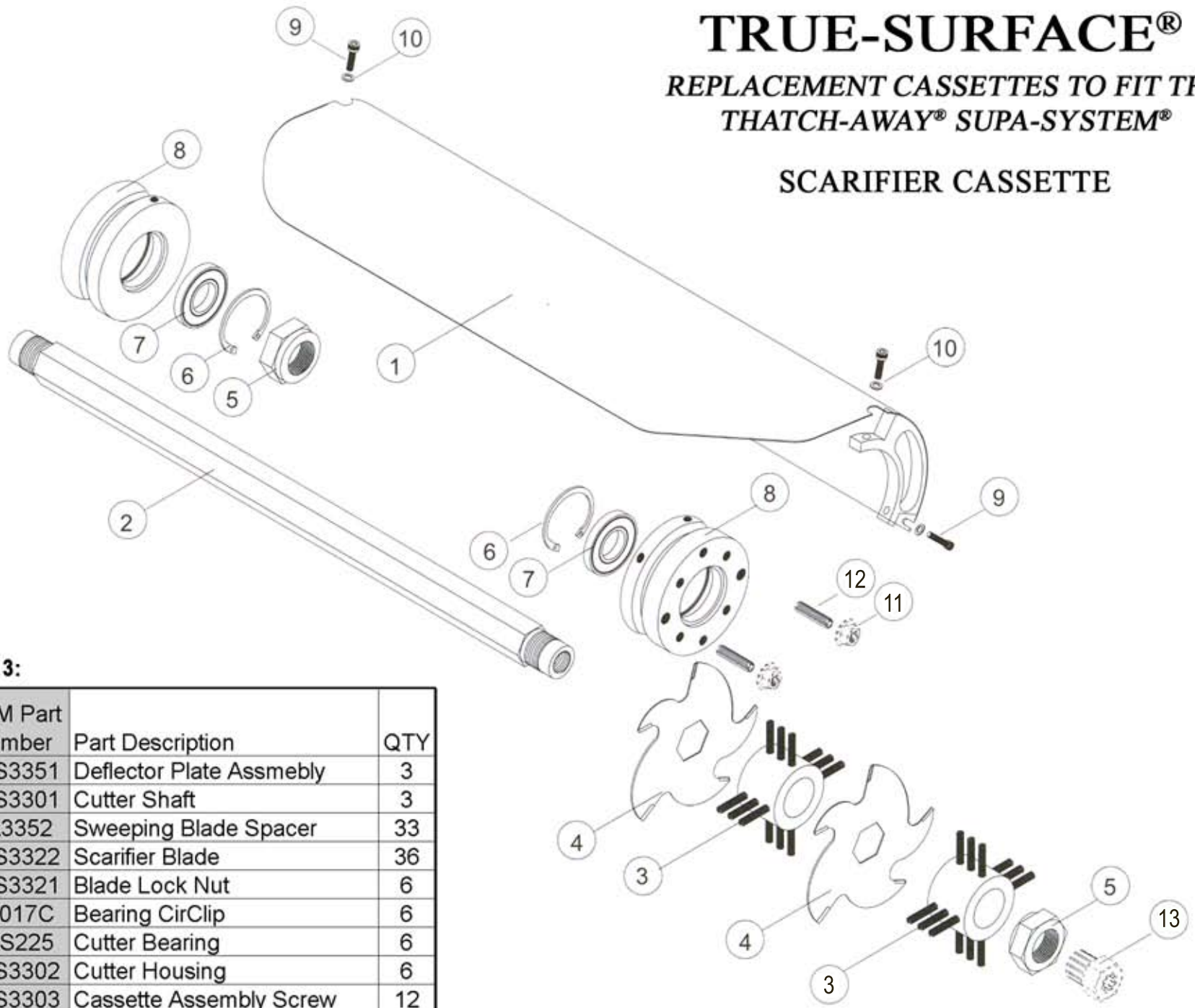
No.	True-Surface® Part Number	OEM Part Number	Part Description	QTY
1	R-TAS3300	TAS3300	Deflector Plate Assmebly	3
2	R-TAS3301	TAS3301	Cutter Shaft	3
3	21P-GCC sprc	TA3004C	Fan Blade Spacer	138
4	21P-GCC-359	TAS3359	Groomer Blade	135
5	H-14	TAS3321	Blade Lock Nut	6
6	37P-1127	TA017C	Bearing CirClip	6
7	37P-1032	TAS225	Cutter Bearing	6
8	R-TAS3302	TAS3302	Cutter Housing	6
9	H-5002	TAS3304	Spring Washer NG	12
10	H-1401	TAS3303	Cassette Assembly Screw	12
11	*	*	Model Specific	*
12	*	*	Model Specific	*
13	*	*	Model Specific	*

All original equipment manufacturers names and part numbers are used for identification purposes only. We are in no way implying that our products are original equipment parts.

# TRUE-SURFACE®

REPLACEMENT CASSETTES TO FIT THE  
THATCH-AWAY® SUPA-SYSTEM®

## SCARIFIER CASSETTE



Quantities are for a set of 3:

No.	True-Surface® Part Number	OEM Part Number	Part Description	QTY
1	R-TAS3351	TAS3351	Deflector Plate Assmebly	3
2	R-TAS3301	TAS3301	Cutter Shaft	3
3	21P-GCC-352	TA3352	Sweeping Blade Spacer	33
4	21P-GCC-322	TAS3322	Scarifier Blade	36
5	H-14	TAS3321	Blade Lock Nut	6
6	37P-1127	TA017C	Bearing CirClip	6
7	37P-1032	TAS225	Cutter Bearing	6
8	R-TAS3302	TAS3302	Cutter Housing	6
9	H-1401	TAS3303	Cassette Assembly Screw	12
10	H-5002	TAS3304	Spring Washer NG	12
11	*	*	Model Specific	*
12	*	*	Model Specific	*
13	*	*	Model Specific	*

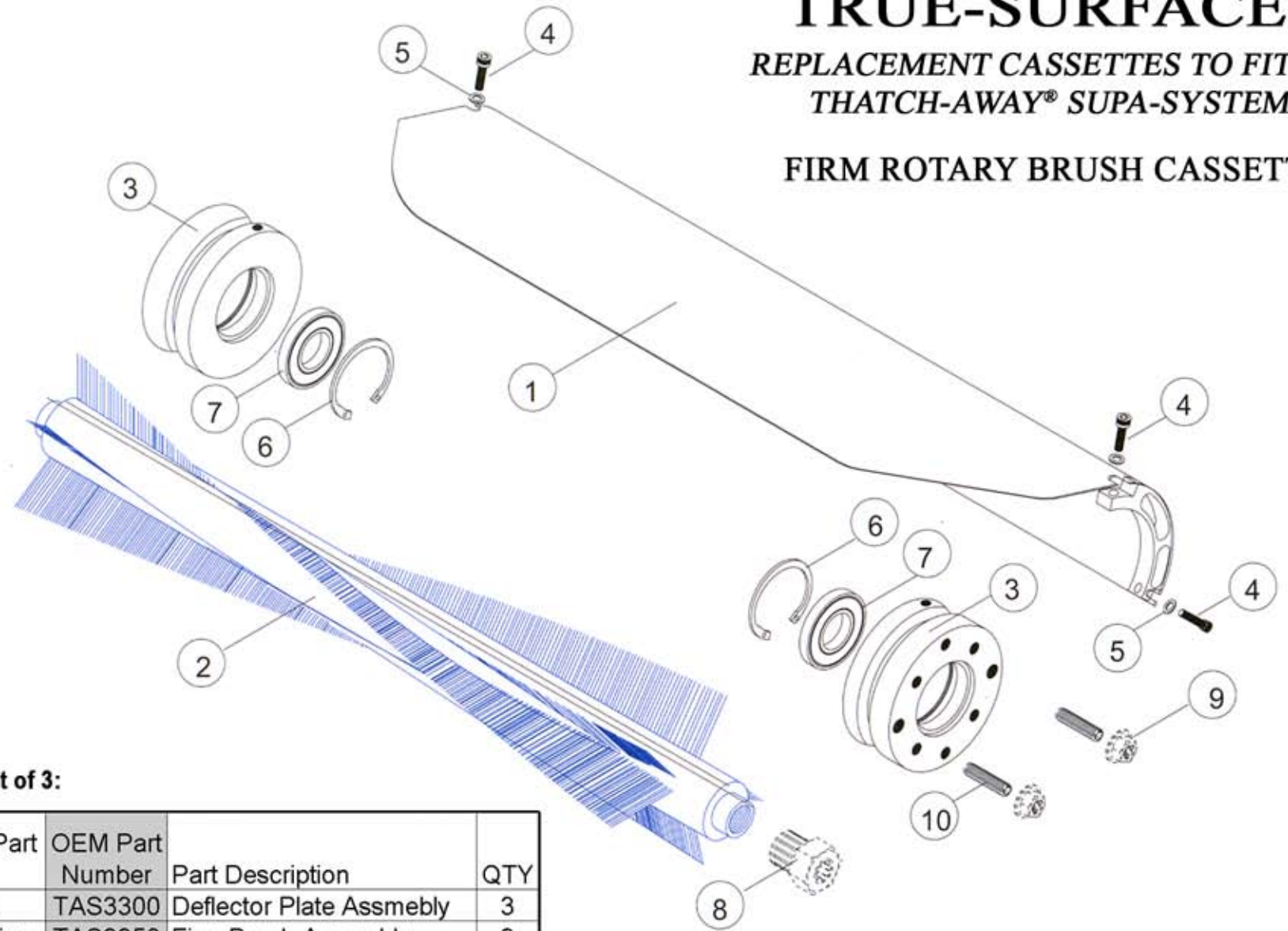
All original equipment manufacturers names and part numbers are used for identification purposes only. We are in no way implying that our products are original equipment parts.



# TRUE-SURFACE®

REPLACEMENT CASSETTES TO FIT THE  
THATCH-AWAY® SUPA-SYSTEM®

## FIRM ROTARY BRUSH CASSETTE



Quantities are for a set of 3:

No.	True-Surface® Part Number	OEM Part Number	Part Description	QTY
1	R-TAS3300	TAS3300	Deflector Plate Assmebly	3
2	21P-GCC-319firm	TAS3358	Firm Brush Assembly	3
3	R-TAS3302	TAS3302	Cutter Housing	6
4	H-1401	TAS3303	Cassette Assembly Screw	12
5	H-5002	TAS3304	Sping Washer NG	12
6	37P-1127	TA017C	Bearing CirClip	6
7	37P-1032	TAS225	Cutter Bearing	6
7	*	*	Model Specific	*
8	*	*	Model Specific	*
9	*	*	Model Specific	*

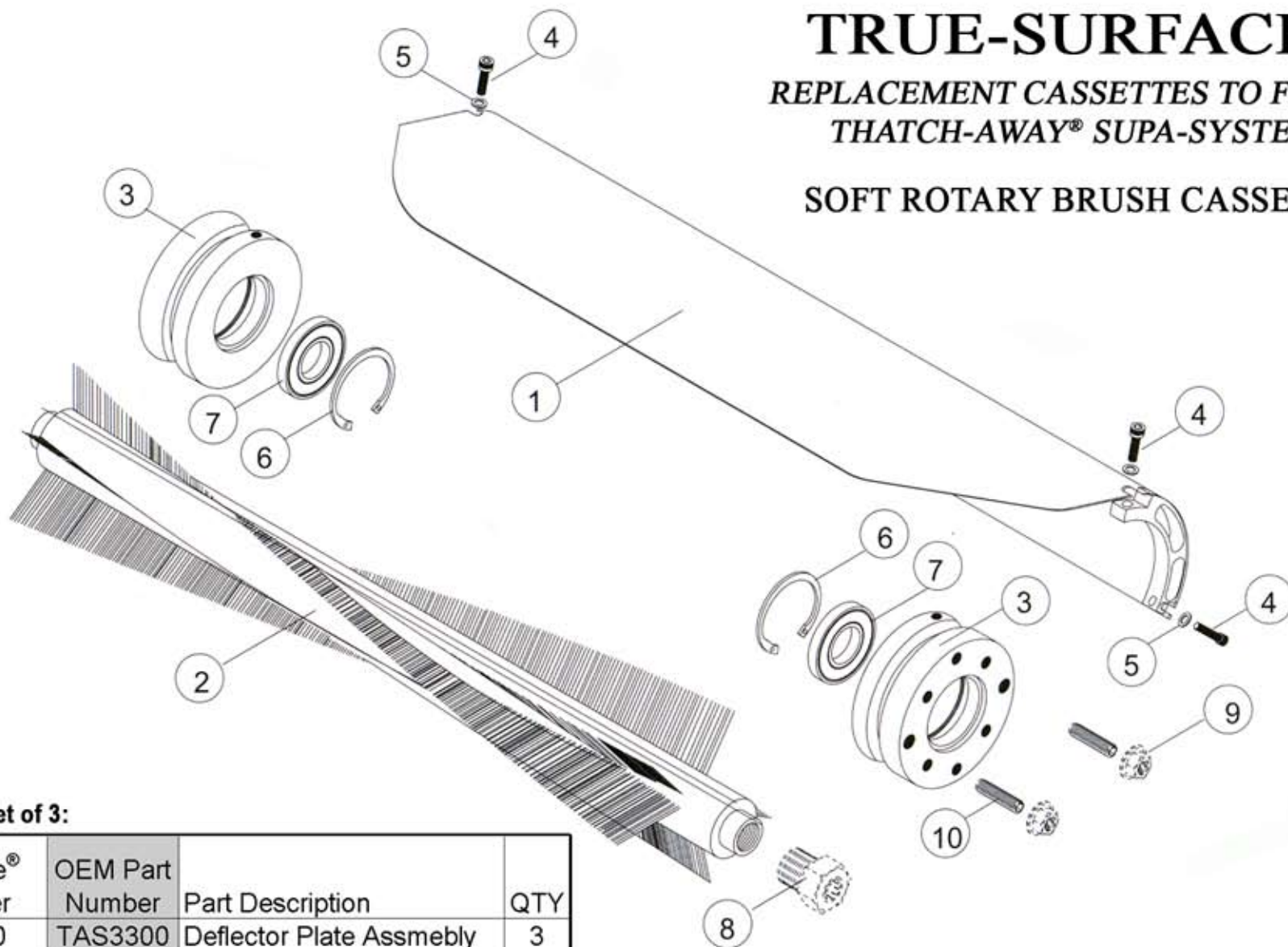
All original equipment manufacturers names and part numbers are used for identification purposes only. We are in no way implying that our products are original equipment parts.



# TRUE-SURFACE®

REPLACEMENT CASSETTES TO FIT THE  
THATCH-AWAY® SUPA-SYSTEM®

## SOFT ROTARY BRUSH CASSETTE



Quantities are for a set of 3:

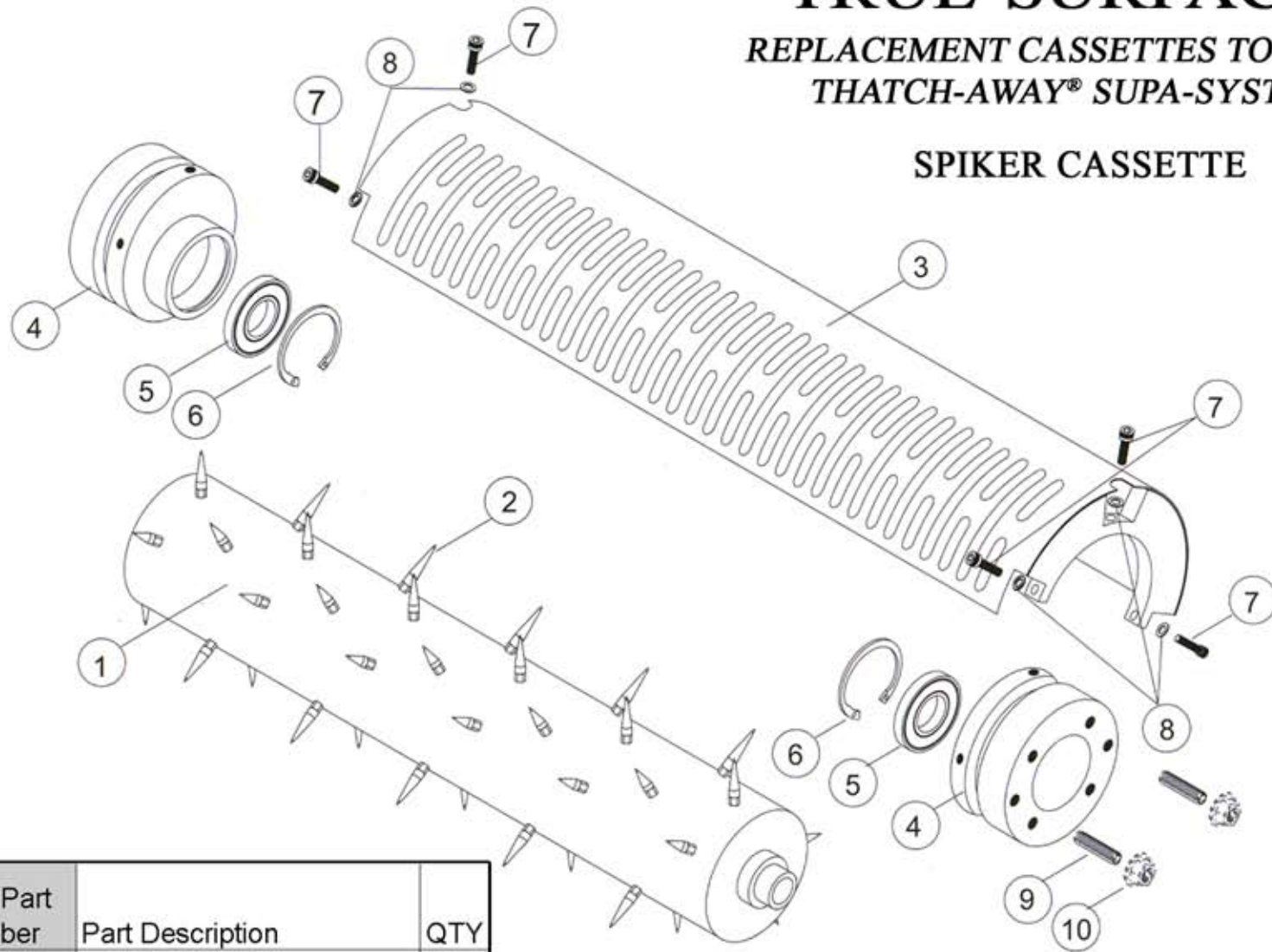
No.	True-Surface® Part Number	OEM Part Number	Part Description	QTY
1	R-TAS3300	TAS3300	Deflector Plate Assmebly	3
2	21P-GCC-319soft	TAS3319	Soft Brush Assembly	3
3	R-TAS3302	TAS3302	Cutter Housing	6
4	H-1401	TAS3303	Cassette Assembly Screw	12
5	H-5002	TAS3304	Sping Washer NG	12
6	37P-1127	TA017C	Bearing CirClip	6
7	37P-1032	TAS225	Cutter Bearing	6
7	*	*	Model Specific	*
8	*	*	Model Specific	*
9	*	*	Model Specific	*

All original equipment manufacturers names and part numbers are used for identification purposes only. We are in no way implying that our products are original equipment parts.

# TRUE-SURFACE®

REPLACEMENT CASSETTES TO FIT THE  
THATCH-AWAY® SUPA-SYSTEM®

## SPIKER CASSETTE



Quantities are for a set of 3:

No.	True-Surface® Part Number	OEM Part Number	Part Description	QTY
1	21P-GCC-348	TAS3348	Spiker Roller	3
2	21P-GCC-349	TAS3349	Spikes	165
3	R-TAS3350	TAS3350	Cover Assembly	3
4	R-TAS3344	TAS3344	Off-Set Cutter Housing	6
5	37P-1032	TAS225	Cutter Bearing	6
6	37P-1127	TA017C	Bearing CirClip	6
7	H-1401	TAS3303	Cassette Assembly Screw	18
8	H-5002	TAS3304	Spring Washer NG	18
9	*	*	Model Specific	*
10	*	*	Model Specific	*

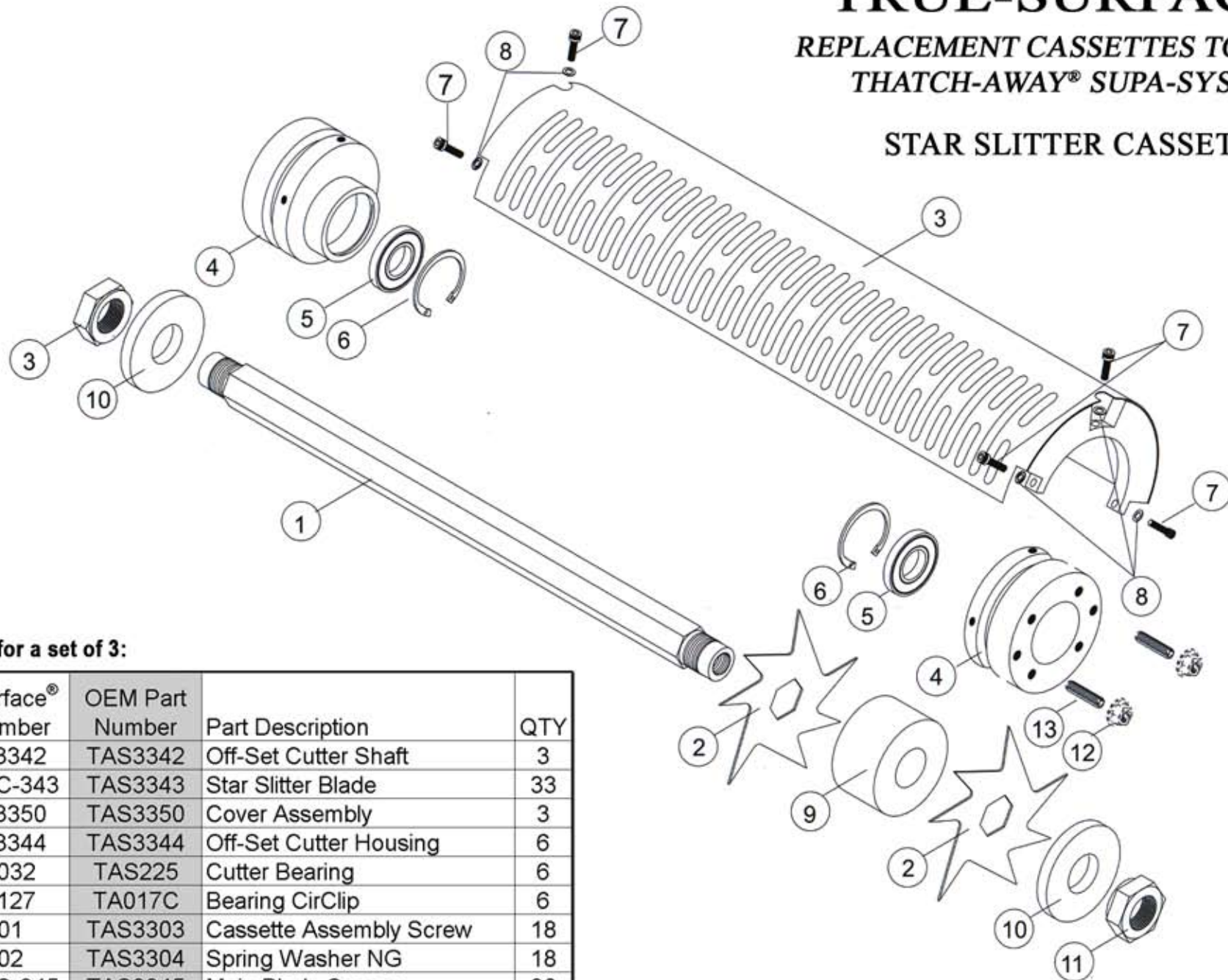
All original equipment manufacturers names and part numbers are used for identification purposes only. We are in no way implying that our products are original equipment parts.



# TRUE-SURFACE®

REPLACEMENT CASSETTES TO FIT THE  
THATCH-AWAY® SUPA-SYSTEM®

## STAR SLITTER CASSETTE



Quantities are for a set of 3:

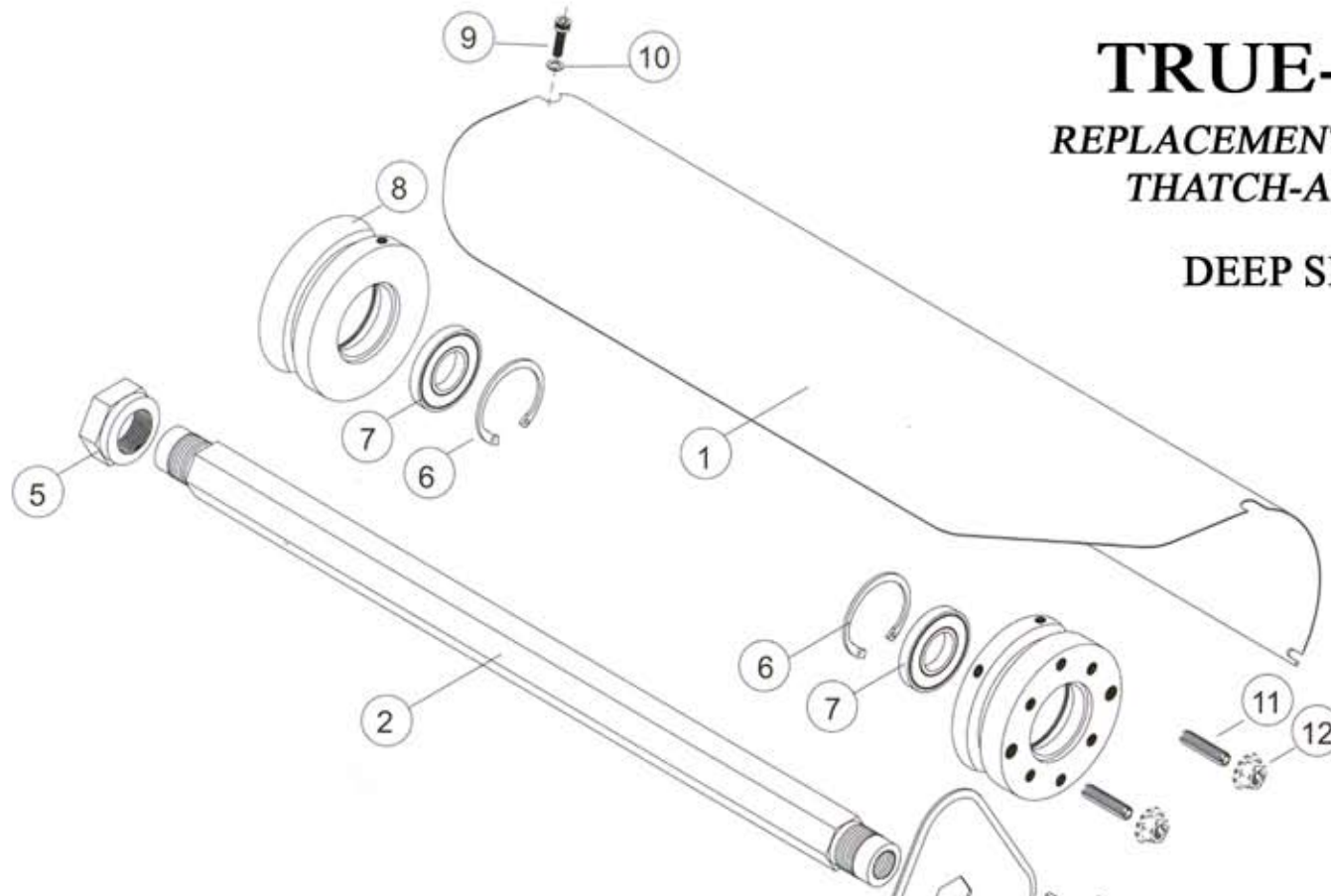
No.	True-Surface® Part Number	OEM Part Number	Part Description	QTY
1	R-TAS3342	TAS3342	Off-Set Cutter Shaft	3
2	21P-GCC-343	TAS3343	Star Slitter Blade	33
3	R-TAS3350	TAS3350	Cover Assembly	3
4	R-TAS3344	TAS3344	Off-Set Cutter Housing	6
5	37P-1032	TAS225	Cutter Bearing	6
6	37P-1127	TA017C	Bearing CirClip	6
7	H-1401	TAS3303	Cassette Assembly Screw	18
8	H-5002	TAS3304	Spring Washer NG	18
9	21P-GCC-345	TAS3345	Main Blade Spacer	30
10	21P-GCC-346	TAS3346	End Blade Spacer	6
11	H-14	TAS3321	Blade Lock Nut	6
12	*	*	Model Specific	*
13	*	*	Model Specific	*

All original equipment manufacturers names and part numbers are used for identification purposes only. We are in no way implying that our products are original equipment parts.

# TRUE-SURFACE®

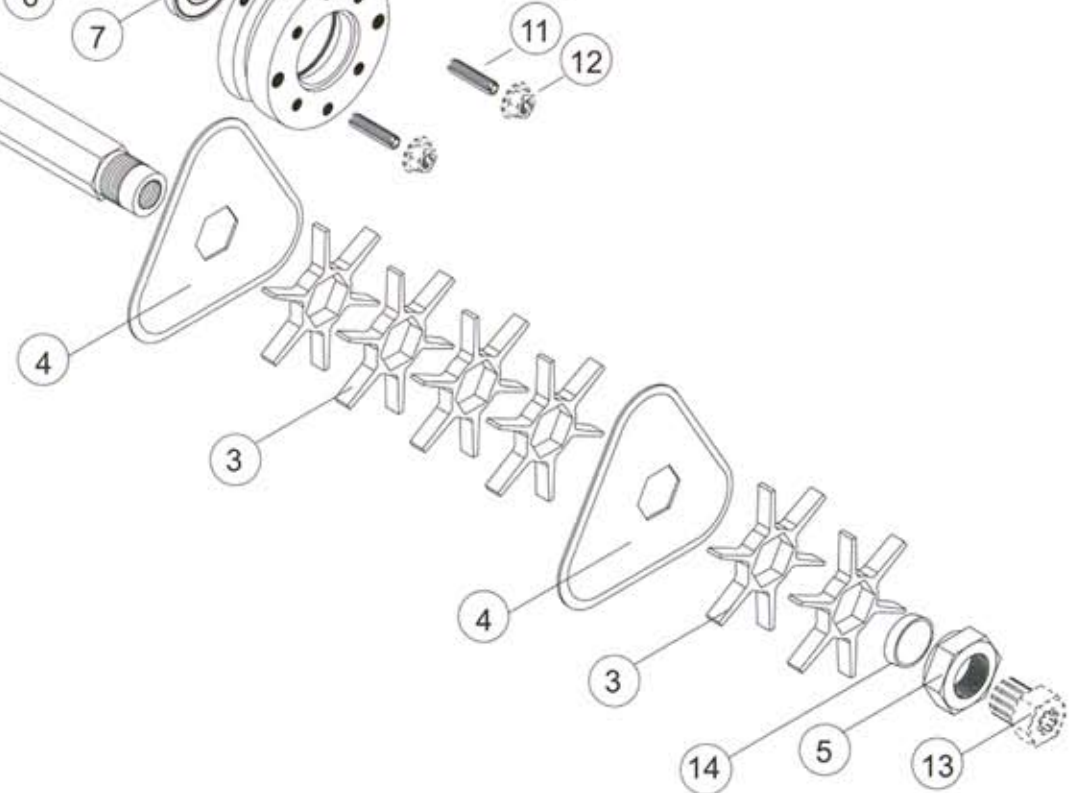
REPLACEMENT CASSETTES TO FIT THE  
THATCH-AWAY® SUPA-SYSTEM®

## DEEP SLICER CASSETTE



Quantities are for a set of 3:

No.	True-Surface® Part Number	OEM Part Number	Part Description	QTY
1	R-TAS3300	TAS3300	Deflector Plate Assmebly	3
2	R-TAS3301	TAS3301	Cutter Shaft	3
3	21P-GCC spcr	TA3004C	Fan Blade Spacer	144
4	21P-GCC-347	TAS3347	Deep Slicer Blade	36
5	H-14	TAS3321	Blade Lock Nut	6
6	37P-1127	TA017C	Bearing CirClip	6
7	37P-1032	TAS225	Cutter Bearing	6
8	R-TAS3302	TAS3302	Cutter Housing	6
9	H-1401	TAS3303	Cassette Assembly Screw	12
10	H-5002	TAS3304	Spring Washer NG	12
11	*	*	Model Specific	*
12	*	*	Model Specific	*
13	*	*	Model Specific	*
14	21P-GCC-354	TAS3385	Cutter Shaft End Spacer	6



All original equipment manufacturers names and part numbers are used for identification purposes only. We are in no way implying that our products are original equipment parts.